

ChromaZona

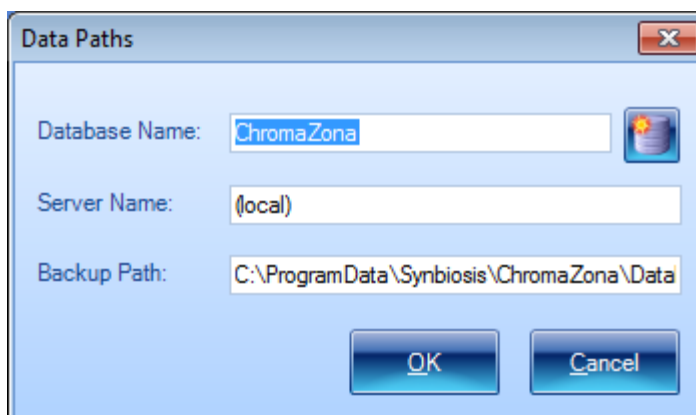
Appendix to ChromaZona Software Installation - Quick Guide

1 Please note SQL Server 2012 requires Windows Vista Service Pack 2, or a higher operating system (Windows 7, Windows 8 etc) to run

2 It is possible to install either Microsoft SQL Server Express or Microsoft SQL Express LocalDB or both. SQL Express LocalDB has much of the functionality of SQL Server Express but without the complex permissions and overheads

3 When SQL Express LocalDB is installed with the installation set supplied by Synbioisis, the server name is (localdb)\v11.0 and the database name is ChromaZona. During the installation some elements of SQL Server Express are installed as they are required for connection of the ChromaZona software to the database. If SQL Express LocalDB has been pre-installed as a standalone installation, then the user will still need to install SQL Server Management Studio

4 SQL Express LocalDB is designed for a single PC user. A single user should log onto the PC and then all users can log onto ChromaZona. **If more than one user is going to log onto Windows on the PC running ChromaZona software you should install SQL Server Express**



If a user wishes to create their own, unshared database they can log onto the PC with their own details and then in ChromaZona connect to SQL Express LocalDB using the server name “(localdb)\v11.0”

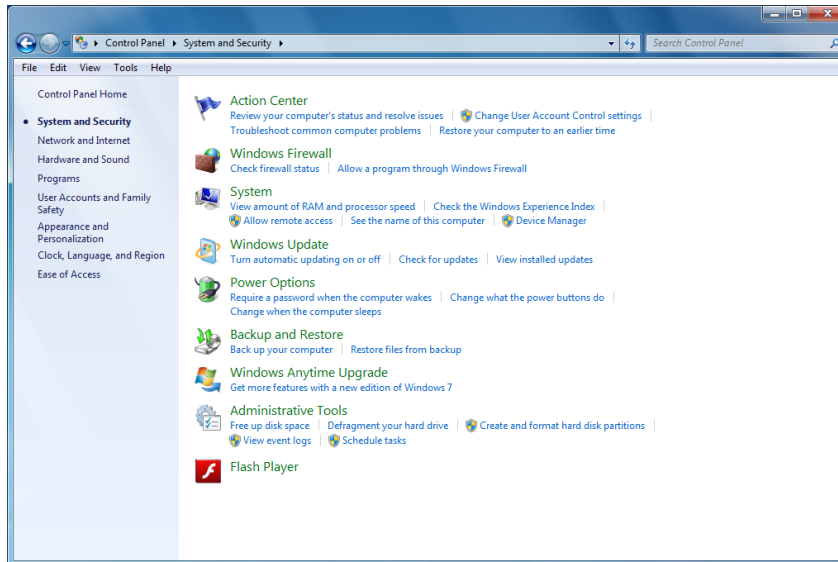
5

If a user is currently using SQL Server Express they can install and use SQL Server LocalDB by running the SetUpSQLServer.exe file, in the Support/Database directory, and selecting LocalDB during the installation

6

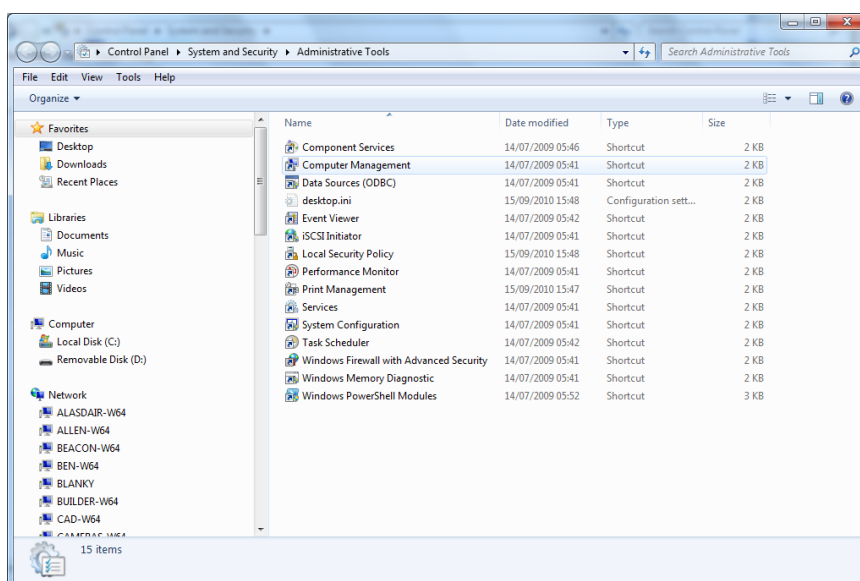
Adding users to SQL Server

The following steps need to be carried out when logged in as Administrator



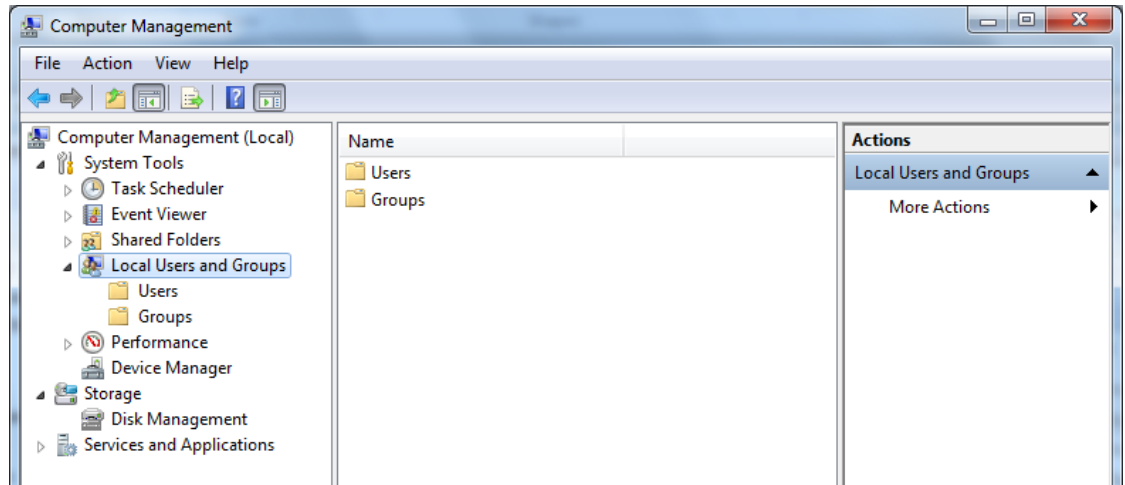
Access the computer control panel and select 'System and Security' then select 'Administrative Tools'

7



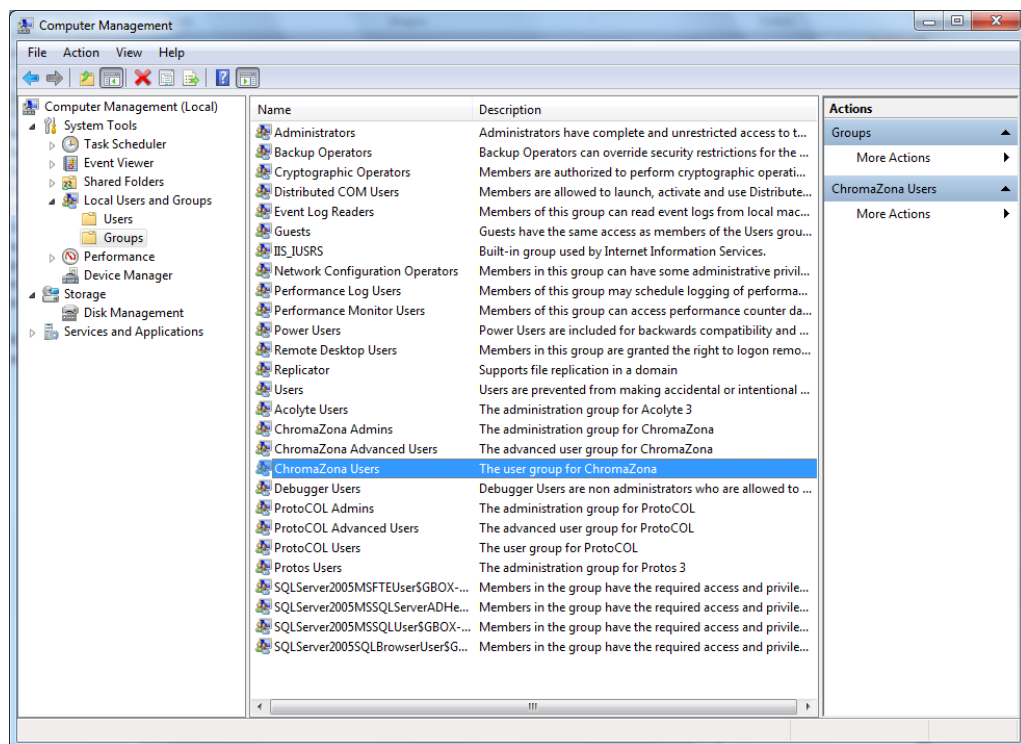
Select Computer Management by double clicking

8



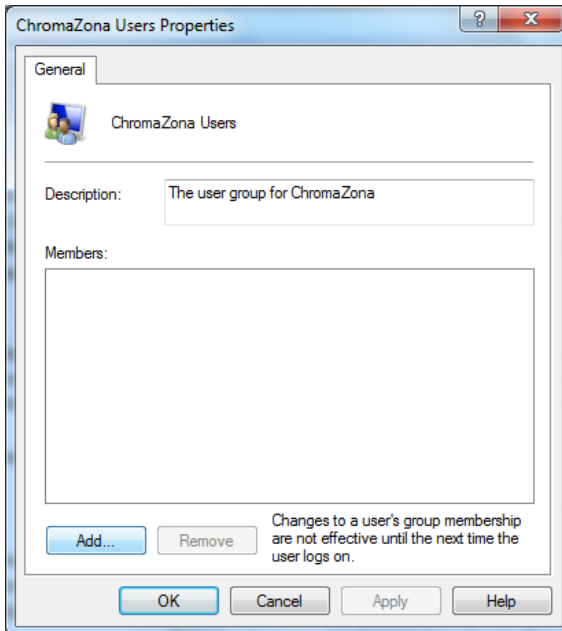
Select local Users and Groups and then click on Groups

9



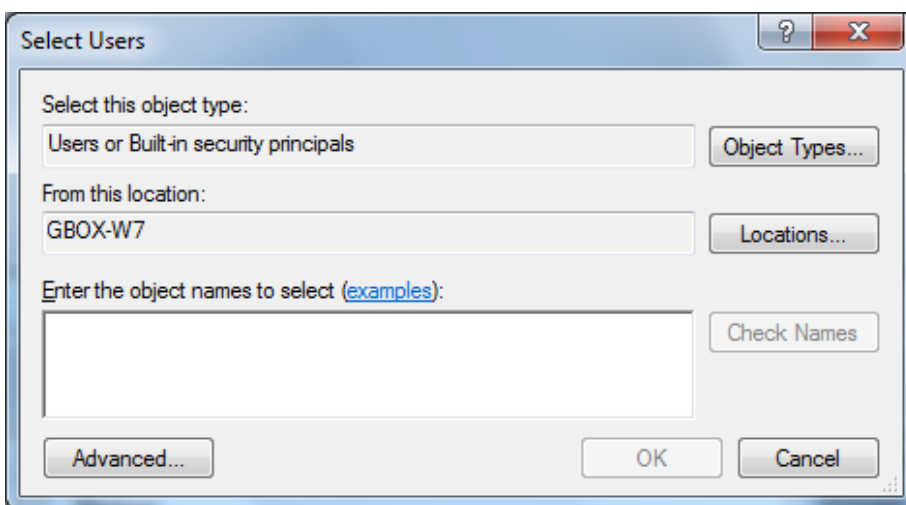
Double click on ChromaZona Users to open the ChromaZona User Properties window

10



Click Add

11

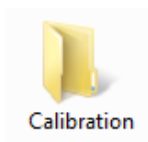


To add a single user add their Windows log in name and click Check Names

When ChromaZona is installed, every user needs to be a member of the User group

12

Run configuration Installation



- ➡ Open the Calibration folder
- ➡ Double click on Setup Calibration
- ➡ Follow the on screen instructions

13

Run ChromaZona software



Log on to the software and ensure the lights cycle Red, Blue and Green. Click on the image tab and select live image to ensure the Camera produces a live image.

ChromaZona is now ready to be used

CONTACT SYNBIOISIS:

EUROPE:
Tel: +44 (0)1223 727125
Email: support@synbiosis.com

USA:
Tel: 800 686 4451/301 662 2863
Email: support@synbiosis.com